

## 聴音 ピアノ4級・ヴァイオリン3級

単旋律

g :

Two staves of musical notation in G minor (one flat) and 6/8 time. The first staff begins with a treble clef and a common time signature, which then changes to 6/8. The melody consists of eighth and sixteenth notes with some rests. The second staff continues the melody, ending with a double bar line.

複旋律

e :

Two staves of musical notation in E major (two sharps) and 4/4 time. The first staff has a treble clef and the second has a bass clef. The melody is composed of quarter and eighth notes. The second staff continues the melody, ending with a double bar line.

Two staves of musical notation in E major (two sharps) and 4/4 time. The first staff has a treble clef and the second has a bass clef. The melody is composed of quarter and eighth notes. The second staff continues the melody, ending with a double bar line.

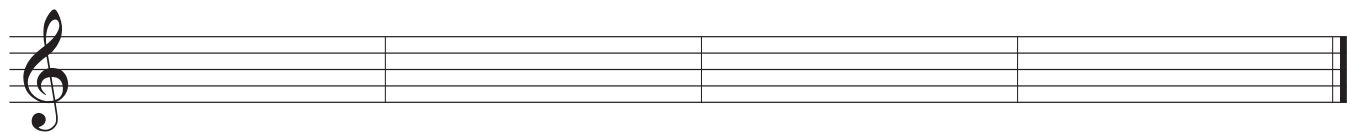
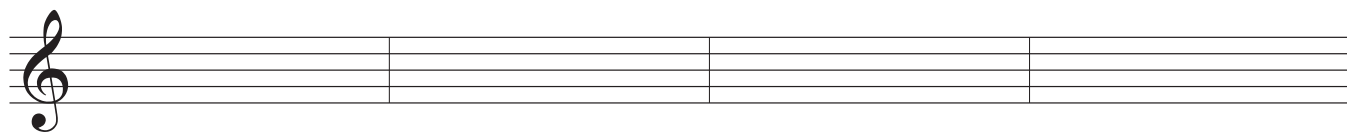
和声

C :

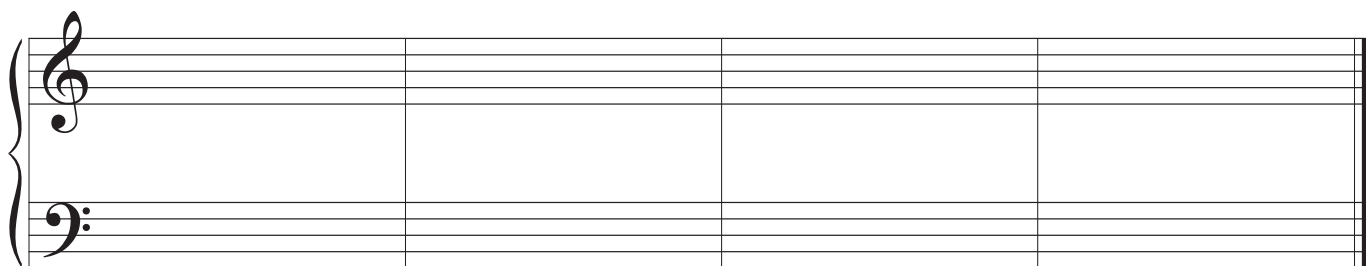
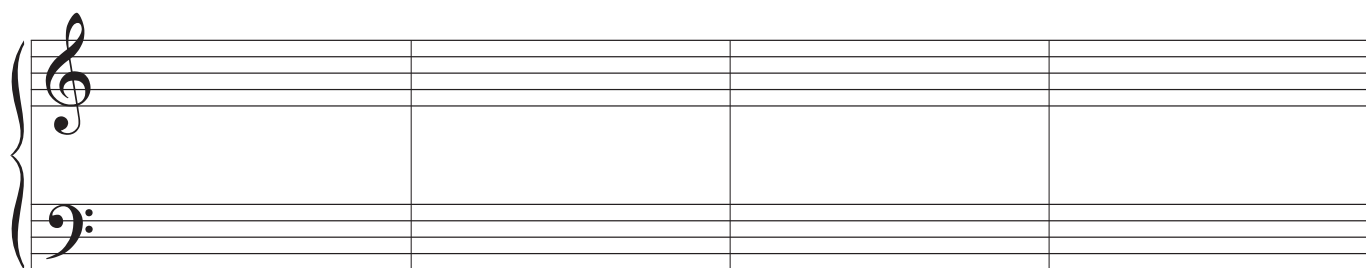
Two staves of musical notation in C major (no sharps or flats) and common time. The first staff has a treble clef and the second has a bass clef. The notation shows chords in the right hand and single notes in the left hand. The second staff continues the harmony, ending with a double bar line.

聴音 ピアノ 4 級・ヴァイオリン 3 級

単旋律



複旋律



和声

