

# 聴音 1級

## 単旋律

h :

Two staves of musical notation in G major (one sharp) and 6/8 time. The first staff begins with a treble clef and a key signature of one sharp. The melody consists of eighth and sixteenth notes with some rests. The second staff continues the melody with similar rhythmic patterns.

## 複旋律

Es :

Two staves of musical notation in E-flat major (three flats) and 4/4 time. The first staff has a treble clef and the second has a bass clef. The melody in the treble clef features eighth and sixteenth notes, including a triplet of eighth notes. The bass clef part provides a harmonic accompaniment with quarter and eighth notes.

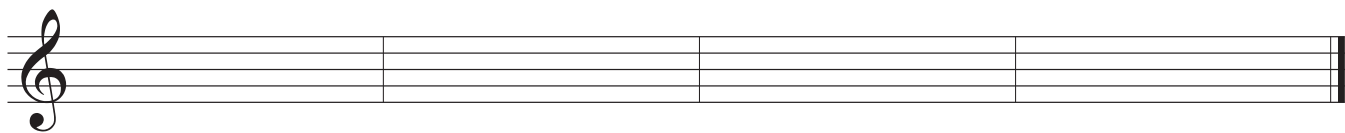
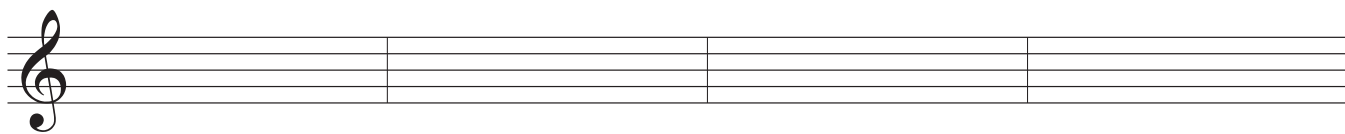
## 和声

F :

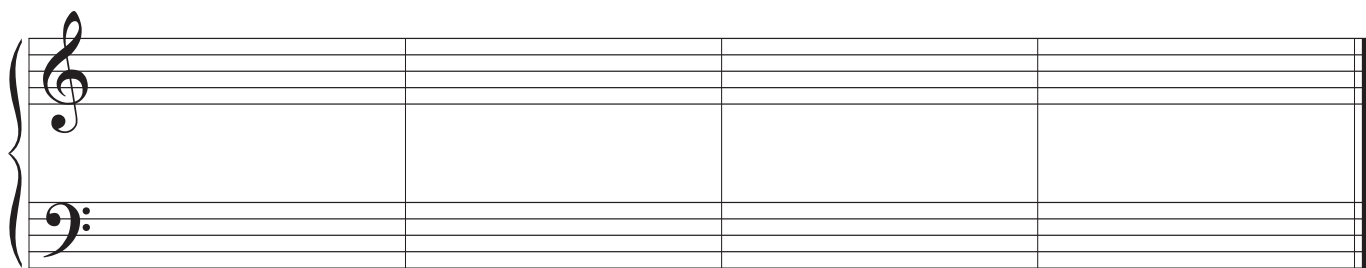
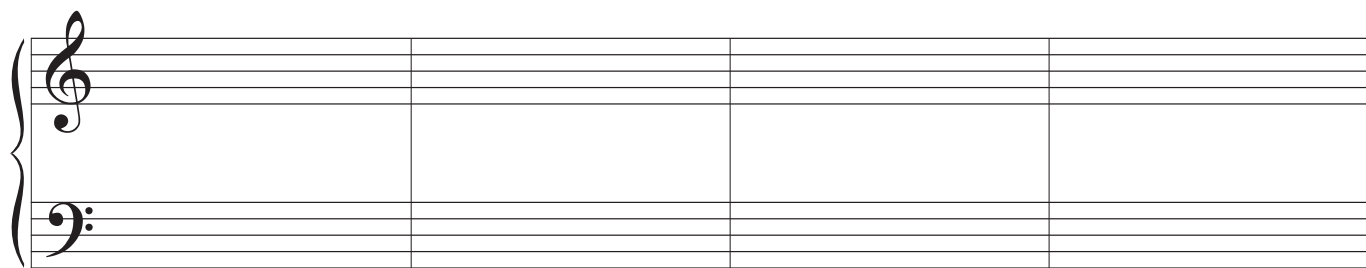
Two staves of musical notation in F major (two flats) and common time (C). The first staff has a treble clef and the second has a bass clef. The exercise consists of chords in both hands, primarily using quarter and eighth notes.

# 聽音 1 級

單旋律



複旋律



和聲

