

6級 聽音

单旋律1



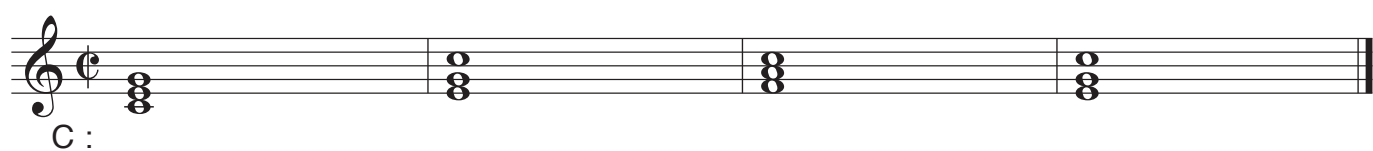
Musical notation for Single Melody 1, consisting of two staves. The first staff is in G major (one sharp) and 3/4 time, starting with a treble clef and a G: chord symbol. The melody consists of eighth and quarter notes. The second staff continues the melody with eighth and quarter notes, ending with a double bar line.

单旋律2



Musical notation for Single Melody 2, consisting of two staves. The first staff is in A major (two sharps) and 6/8 time, starting with a treble clef and an a: chord symbol. The melody consists of eighth and quarter notes. The second staff continues the melody with eighth and quarter notes, ending with a double bar line.

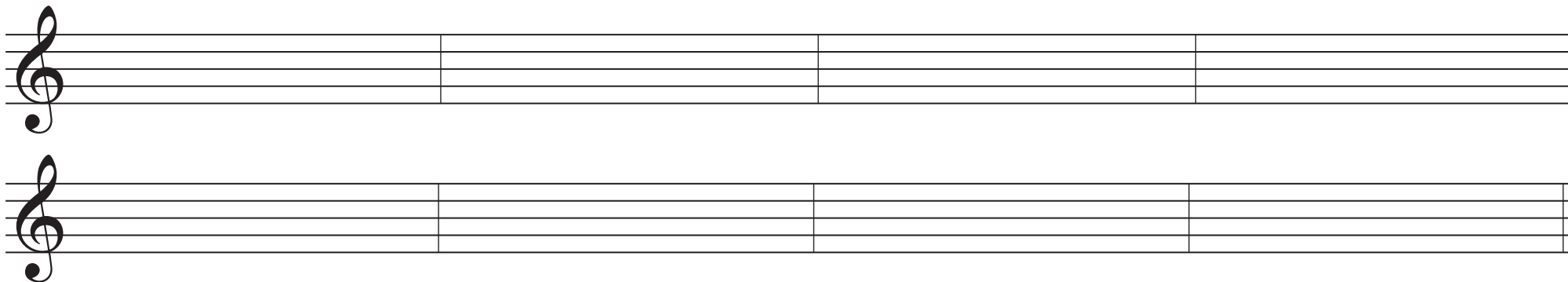
和声



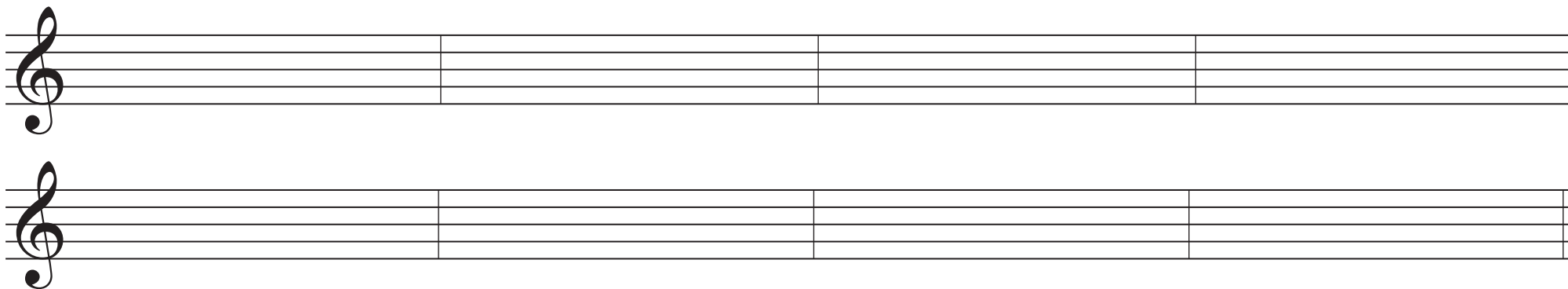
Musical notation for Harmony, consisting of a single staff in C major (no sharps or flats) and common time (C). The notation shows four chords: C major, F major, C major, and F major, each represented by a vertical stack of notes on the staff.

# 6級 聽音

单旋律1



单旋律2



和声

