

5級 聴音

单旋律1

Single melody 1, first line. Treble clef, key signature of one sharp (F#), 4/4 time signature. The melody consists of 12 notes: E4, G4, A4, B4, C5, D5, E5, D5, C5, B4, A4, G4. The notes are written on a five-line staff.

e :

Single melody 1, second line. Treble clef, key signature of one sharp (F#), 4/4 time signature. The melody continues from the first line. The notes are: F#4, G4, A4, B4, C5, D5, E5, D5, C5, B4, A4, G4. The melody ends with a double bar line.

单旋律2

Single melody 2, first line. Treble clef, key signature of one flat (Bb), 6/8 time signature. The melody consists of 12 notes: F4, G4, A4, Bb4, C5, Bb4, A4, G4, F4, G4, A4, Bb4. The notes are written on a five-line staff.

F :

Single melody 2, second line. Treble clef, key signature of one flat (Bb), 6/8 time signature. The melody continues from the first line. The notes are: C5, Bb4, A4, G4, F4, G4, A4, Bb4, C5, Bb4, A4, G4. The melody ends with a double bar line.

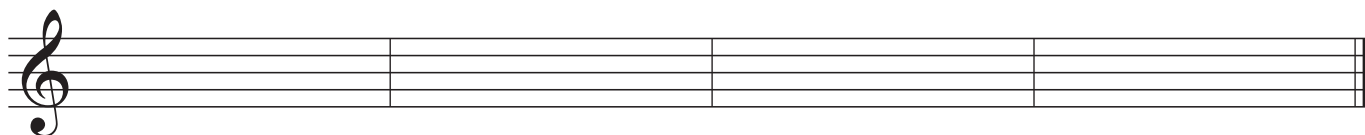
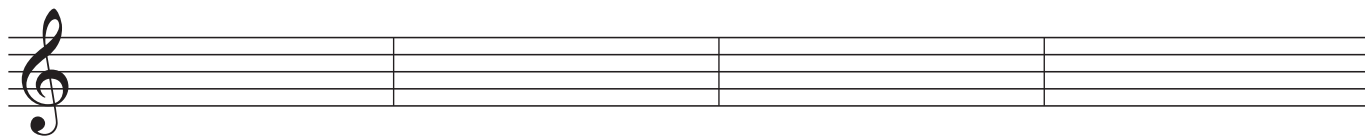
和声

Harmony. Treble clef, key signature of one flat (Bb), common time signature. The harmony consists of six chords: C4, F4, C4, F4, C4, F4. The notes are written on a five-line staff.

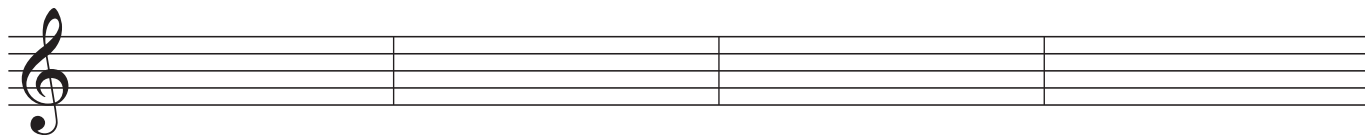
C :

5級 聽音

单旋律1



单旋律2



和声

