

2級 聴音

単旋律

A :
Musical notation for a single melody exercise. It consists of two staves in treble clef, key signature of two sharps (D major), and 3/4 time signature. The melody is written in a single line across both staves.

複旋律

d :
Musical notation for a double melody exercise. It consists of two staves in treble and bass clef, key signature of one flat (B-flat major), and 3/4 time signature. The melody is written in two lines across both staves.

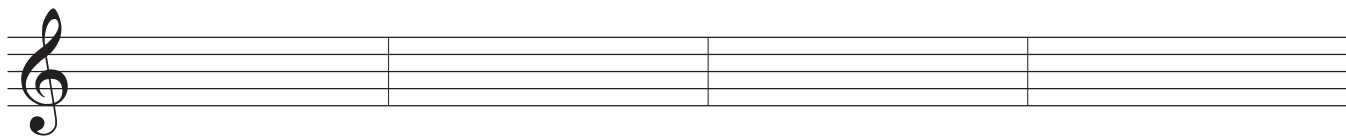
和声

e :
Musical notation for a harmony exercise. It consists of two staves in treble and bass clef, key signature of one sharp (F# major), and common time signature. The melody is written in two lines across both staves.

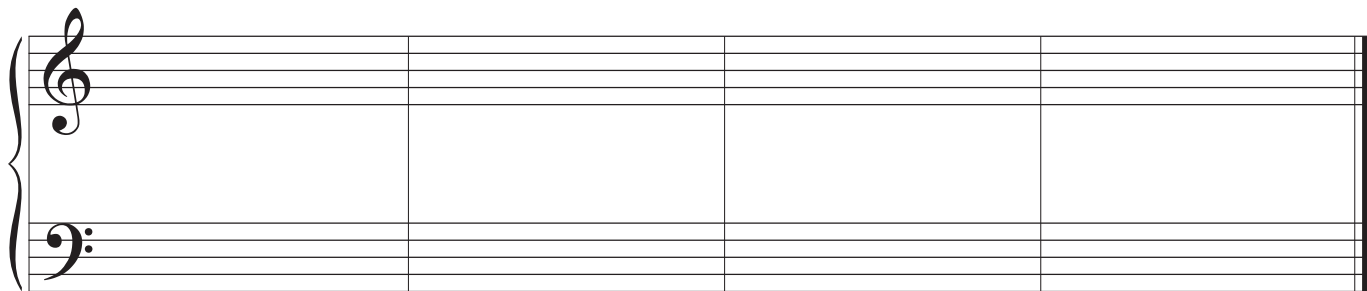
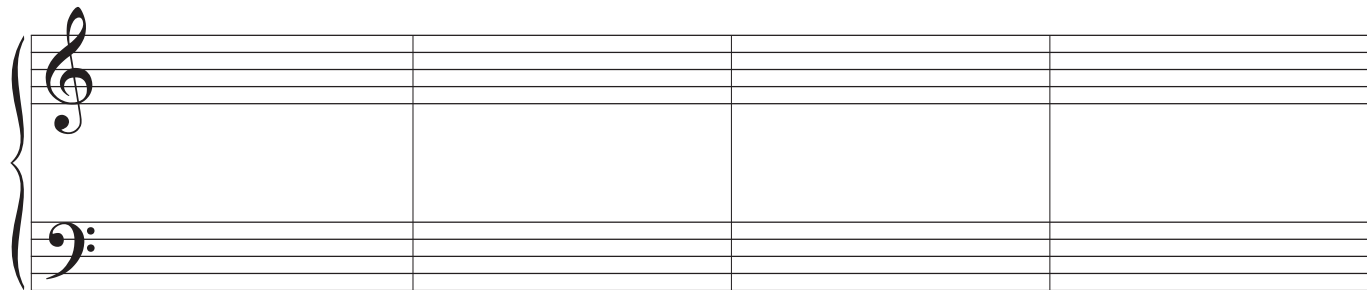
e :

2級 聴音

単旋律



複旋律



和声

